



# IVORY PLAZA

NEW CAPITAL

Ever wondered what is beyond the walls ... the  
boundaries ... the unknown?

Chasing the place where nothing stands  
between you and your never-ending desire for  
Serenity, Euphoria and Triumph.

A place where reality surpasses your imagination  
... Where expectations come to life.

So here we stand, redefining the norms of an  
utterly integrated business environment.

# THE IVORY PLAZA ... BEYOND EXPECTATIONS





# A WORD FROM THE DEVELOPER

We are pleased to announce our partnership with the Real estate's Tycoon; **Sabbour Consulting**. Together, we present the birth of our latest collaboration in the eye of the New Capital ...

## The Ivory Plaza.

The Ivory Plaza is the outcome of a collective team effort, with hundreds of masterful minds striving together towards one mission. An integrated service complex, designed to cater all your desires, from fully finished units to a vast range of alluring facilities.

From this moment on, we pledge to go beyond the expected, to grant you the staggering environment you truly deserve.





# WELCOME

The Ivory Plaza is a polished fully integrated service complex. Designed to create a balanced fusion between an urbane life style, together with a refined business atmosphere.

Aiming to serve a surrounding population of more than 200,000 people, this advanced high tech complex is constructed over 20,000 m<sup>2</sup>.

It includes Administrative Business Offices, fully finished Serviced Apartments, Medical Clinics, as well as Commercial Plaza.

Offering a wide range of compelling amenities such as a Gym, a Spa, and a rooftop Sky Lounge.





# IN THE EYE OF THE NEW CAPITAL

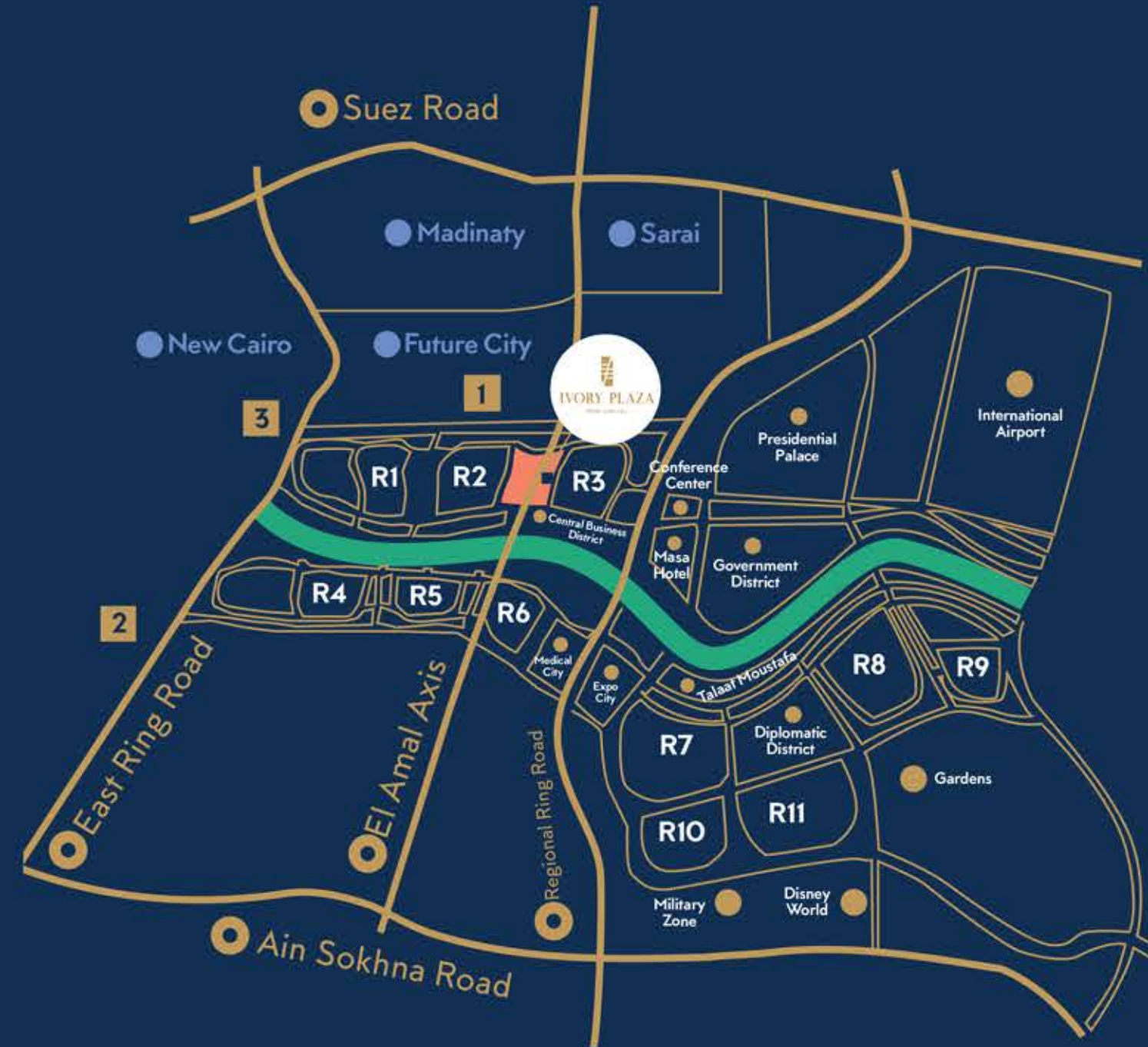
INCOMPARABLE STRATEGIC LOCATION IN THE HEART OF THE BUSINESS HUB

8 minutes from New Cairo.

8 minutes from Sokhna Road.

5 minutes from Suez Road.

- Serving a population of more than 200.000.
- Al Amal Axis is the main road which is crossing the whole New Capital.
- Between **R2** and **R3** Zone which is already built and sold out.



## Surrounding Projects

- |   |   |
|---|---|
| <b>1</b> Hassan Allam<br>Tatweer Misr<br>Sabbour  | <b>3</b> La Vista<br>Marassem<br>Dorra<br>Palm Hills<br>Mountain View |
| <b>2</b> Emaar<br>Hyde Park<br>Sodic<br>Lake View<br>Palm Hills<br>Sabbour<br>Mountain View |   |





# PICTURE PERFECT

AIM  
BEYOND  
SUCCESS







Ever wondered what is beyond the walls ...  
the boundaries ... the unknown?  
Chasing the place where nothing stands between  
you and your never-ending desire for Serenity,  
Euphoria and Triumph.  
A place where reality surpasses your imagination ...  
Where expectations come to life.



# LIVE BEYOND THE MOMENT





# SERVICED APARTMENTS



Never settle... Go where you feel most alive, and experience a hassle free zesty life in our luxurious fully finished Serviced Apartments.

Offering a regular Housekeeping Service and an access to a -24hour Reception.

So, don't miss out on this nourishing ambience, and make every day feel like life had just begun.



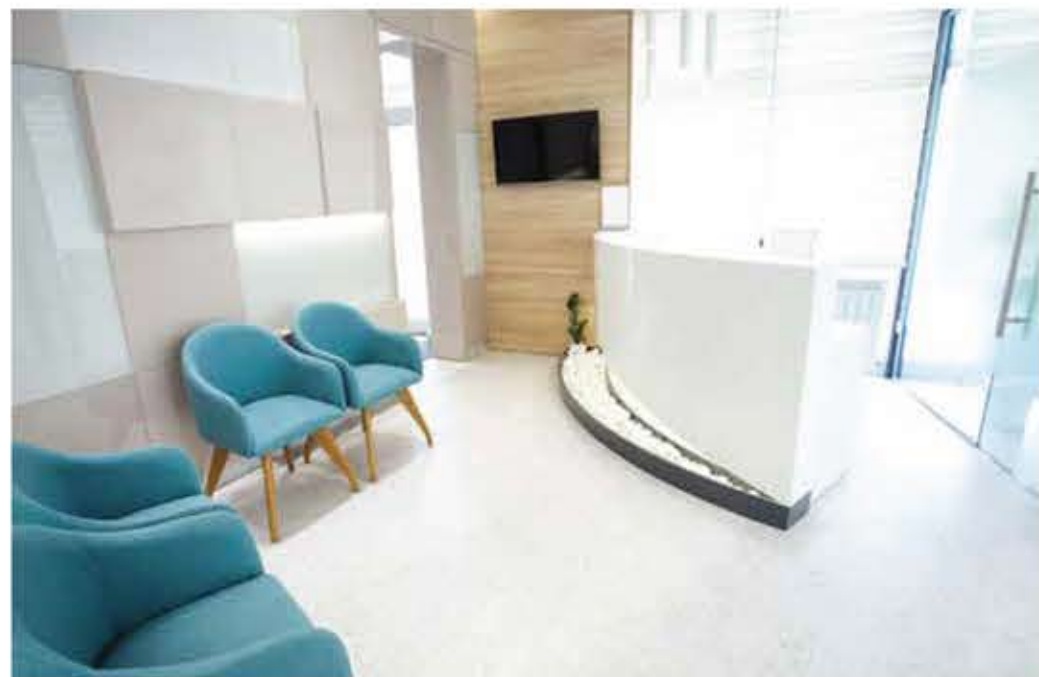
CHOOSE  
BEYOND  
CONVENIENCE



# MEDICAL CLINICS




What a better way to start your Medical Practice than in a place serving more than 200,000 people. Be amongst the finest and select your clinic space from a wide range of available units.





CONNECT  
BEYOND  
WORDS

A close-up photograph of a person's hands holding a small, patterned ceramic mug. The person is wearing a bright yellow, long-sleeved garment with a gathered cuff. The background is softly blurred, showing what appears to be a window with light coming through.



# REFINED RESTAURANTS AND COFFEE SHOPS



Create unforgettable blissful moments, while sharing a mouthwatering bite with a juicy gossip in our urban Restaurants and Coffee Shops.

IVORY PLAZA  
NEW CAPITAL





# SHINE BEYOND THE CROWD







# THE BANKING AND SERVICE HUB



Always rushing to have things done? Asking yourself when will you ever have sometime for yourself.

Time is limited... however; your yearnings are increasing each and every day. Hold the world in your grip, and benefit from our broad range of Commercial Services and Banking Hub, where everything is just one-step away.



# THE DETAILS THAT TAKE YOU FURTHER

## THE COMPLEX'S AMENITIES:



BUSINESS CENTER



SOLAR CELL



MINI SPA & GYM



FIRE FIGHTING SYSTEM



CONFERENCE ROOM



ELECTRICITY GENERATOR



UNDERGROUND PARKING  
(355 SLOTS)



CENTRAL AC/S  
(VRV SYSTEM OR EQUIVELANT)



BUSINESS LOUNGE



SECURITY & SURVEILLANCE  
SYSTEM



HIGH SPEED INTERNET



SKY LOUNGE





GAZE  
BEYOND  
THE  
HORIZON



IVORY PLAZA  
NEW CAPITAL

## SKY LOUNGE

Get lost into the infinite sky and the breathtaking aura of our peerless rooftop Sky Lounge ... Where the stars are your muse and a soothing drink is your company.





# ESCAPE BEYOND SERENITY

## SPA

Free your soul, and surrender to the world of tranquility in our ravishing Spa experience. Where the only distractions are the rhythm of your sighs and the breeze of the surrounding aroma.





# PUSH BEYOND LIMITS

## MINI GYM

Whenever you feel you reached your full potential, go look yourself in the mirror and meet your fiercer competitor. So, unleash your inner beast, and discover your hidden power in our fully equipped Fitness Center.





Firefighting system



Solar Cells



Central AC/s (VRV System or Equivalent)



Security and Surveillance system



High Speed Internet



# LEAP BEYOND THE FUTURE

Throughout our plan to build an integrated complex with this magnitude, we kept our eyes on tomorrow and raced the future. The Ivory Plaza is designed meticulously with advanced global standards and high tech superior infrastructure, powered by Solar Energy and an Electric Generator. We knew the bar was high, so we aimed even higher.



Underground Parking



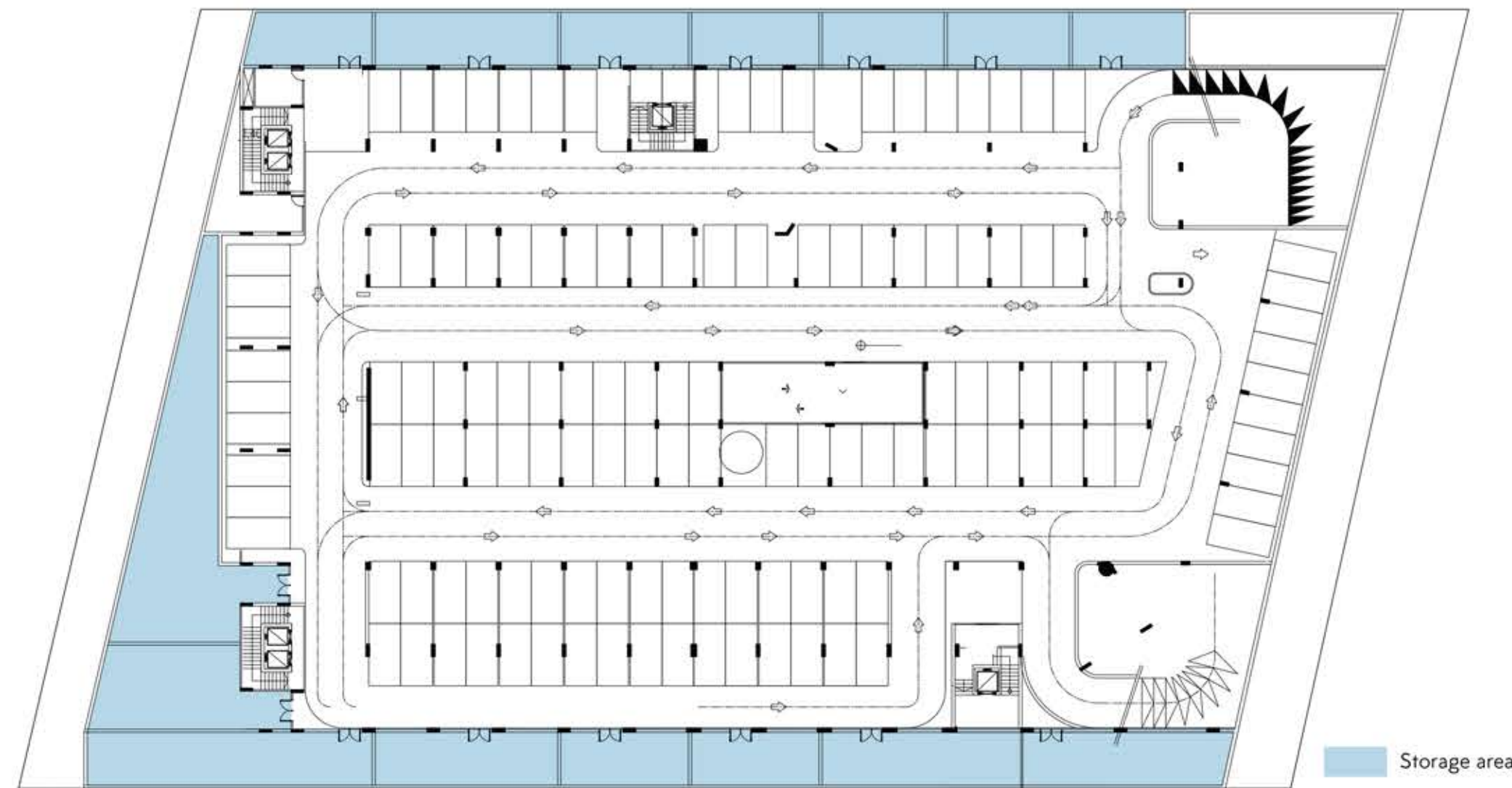
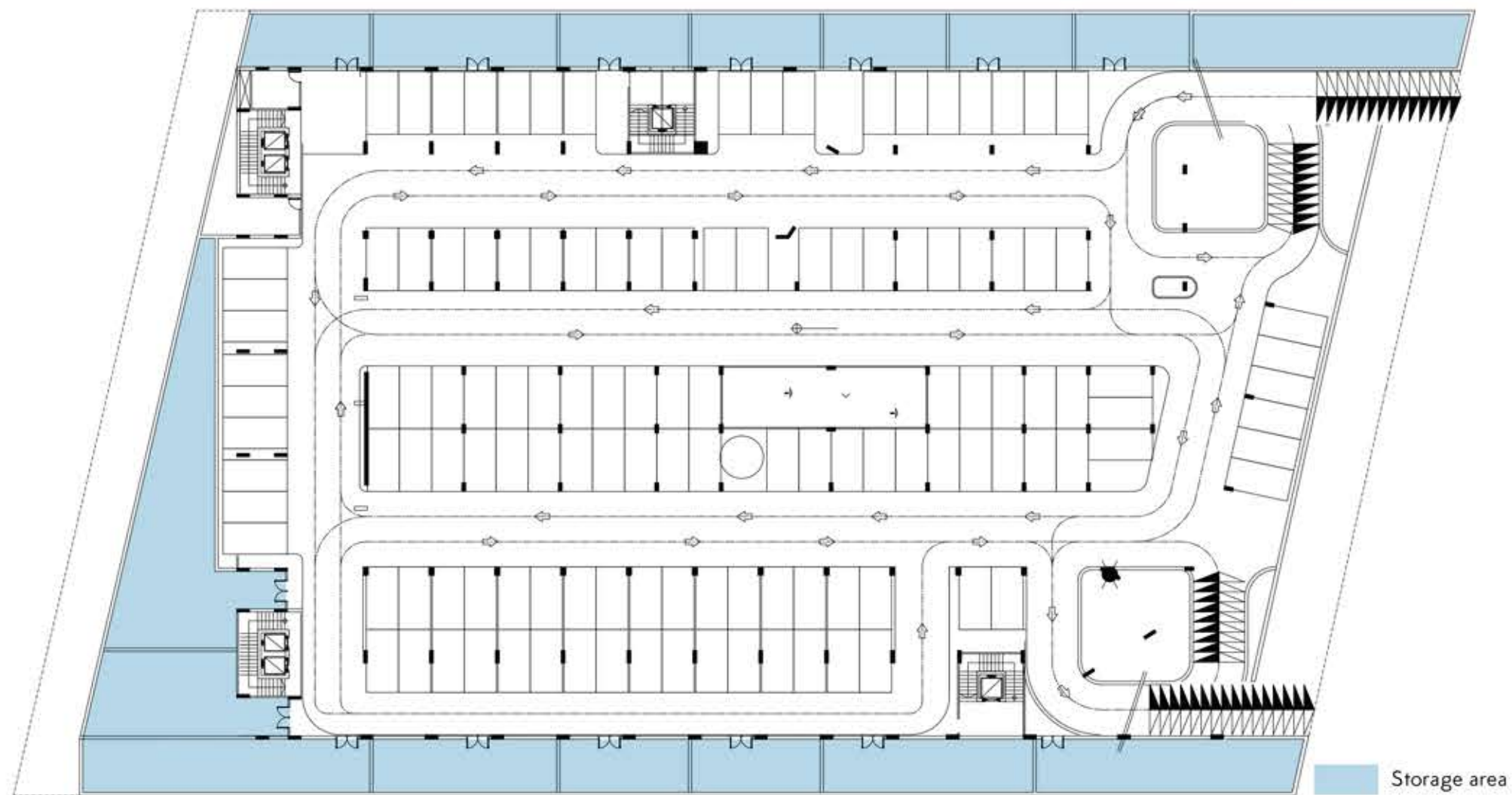
- 1 Commercial area  
( Shops, F&B, Retail, Pharmacy)
- 2 Administritrive offices
- 3 Medical Clinics
- 4 Plaza and open space around 4200 m<sup>2</sup>
- 5 Serviced apartments / Studios
- 6 Conference center and meeting rooms
- 7 Underground parking





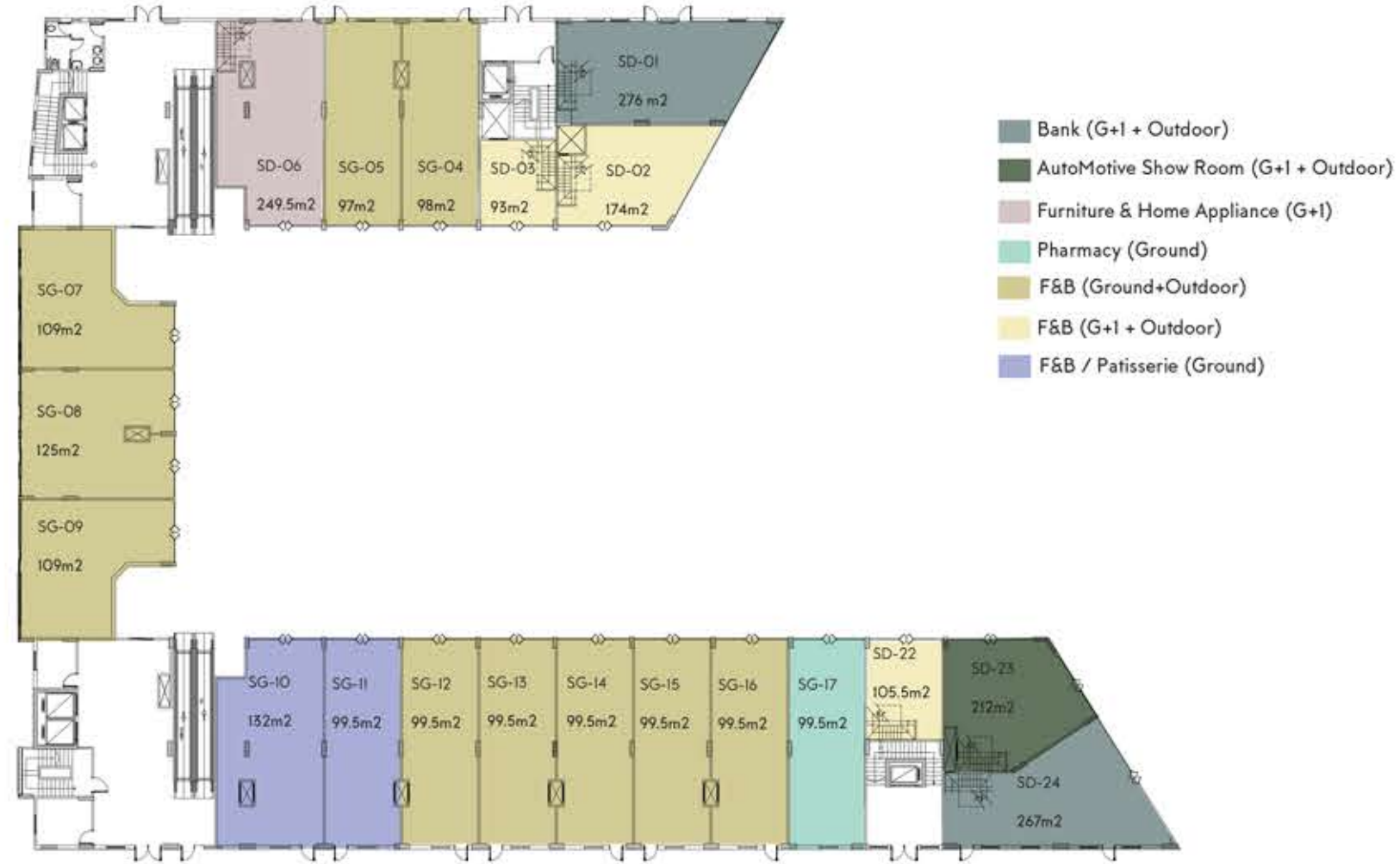
## BASEMENT 1

## BASEMENT 2





# GROUND FLOOR



# FIRST FLOOR





## 2<sup>ND</sup>, 3<sup>RD</sup> & 4<sup>TH</sup> FLOORS 5<sup>TH</sup> & 6<sup>TH</sup> FLOORS

